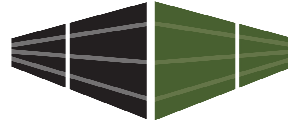
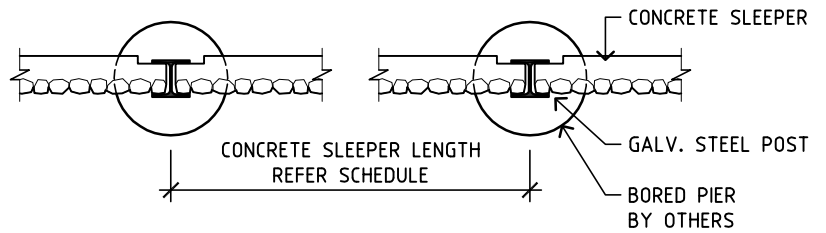


CONCRETE SLEEPER DIMENSIONS (mm)		MAX RETAINING WALL HEIGHT (mm)
LENGTH		
2000	200 x 60	1000

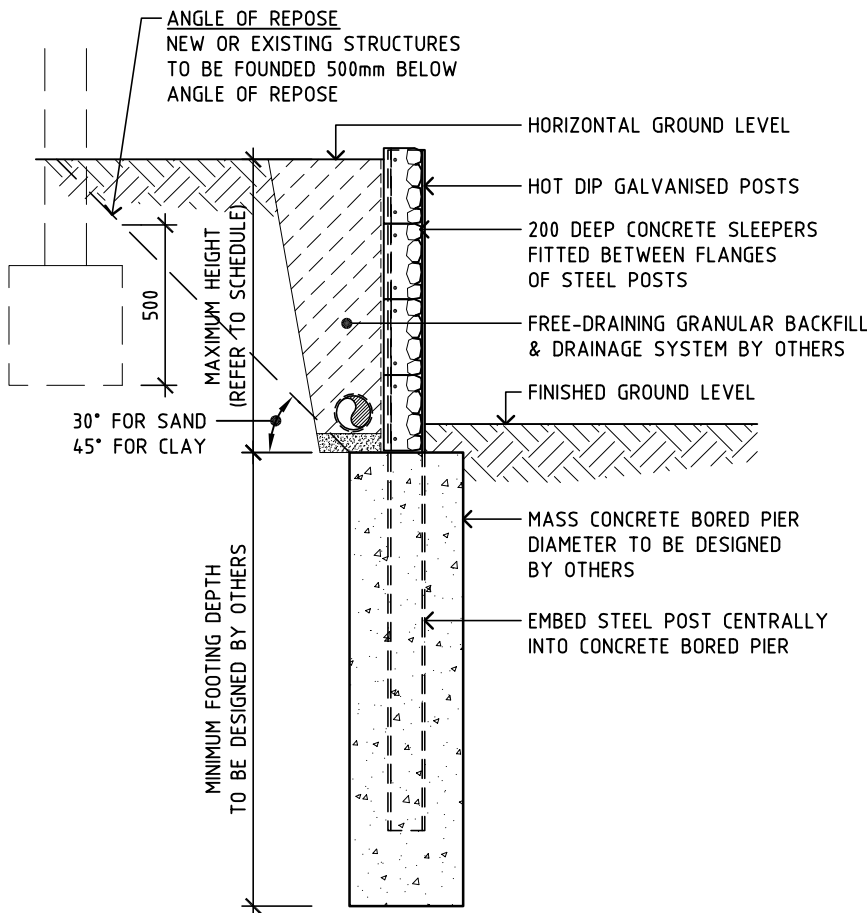


**SLEEPERS**  
D I R E C T

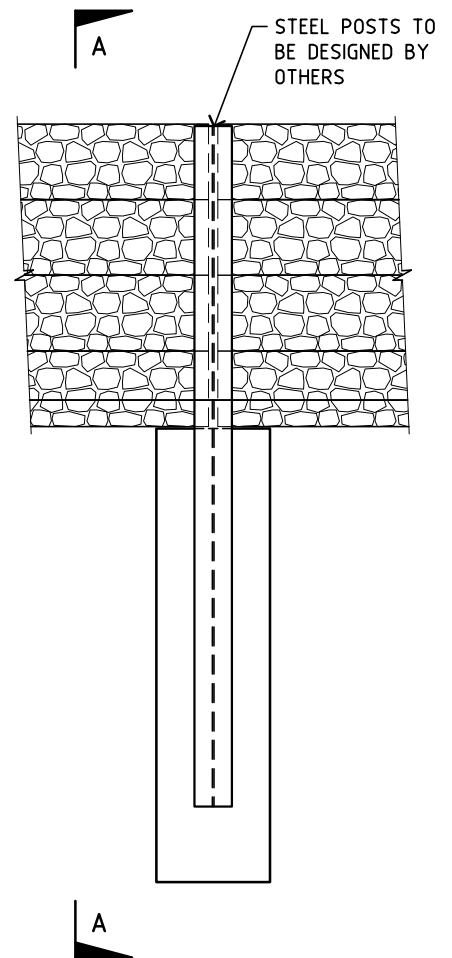
**MAXIMUM SURCHARGE LOAD : 5kPa ( 500kg/m<sup>2</sup> )**



PLAN VIEW



SECTION VIEW A-A



ELEVATION

**'ARTISAN' CONCRETE SLEEPER  
RETAINING WALL SCHEMATIC DIAGRAM**

SCALE = 1:20 @ A4

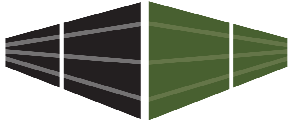
SPECIFICATIONS FOR CONCRETE SLEEPERS

- CONCRETE COMPRESSIVE STRENGTH = 40 MPa
- STEEL REINFORCEMENT = 2No. N10 BARS PLACED CENTRALLY, 25 COVER
- ALL SLEEPERS ARE MECHANICALLY VIBRATED DURING PLACEMENT OF CONCRETE AND STEEL
- SURCHARGE LOAD ASSUMED TO BE 5kPa
- SLOPE AT TOP OF WALL ASSUMED TO BE ZERO
- NO HYDROSTATIC PRESSURE
- ALL NEW OR EXISTING STRUCTURES TO BE 500mm BELOW ANGLE OF REPOSE
- NOT TO BE USED WITHIN 50m OF THE COAST

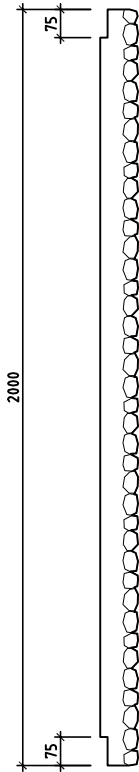
DRAWING No.

**10124A - S1**

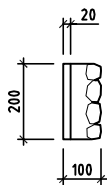
DATE FEB 2017



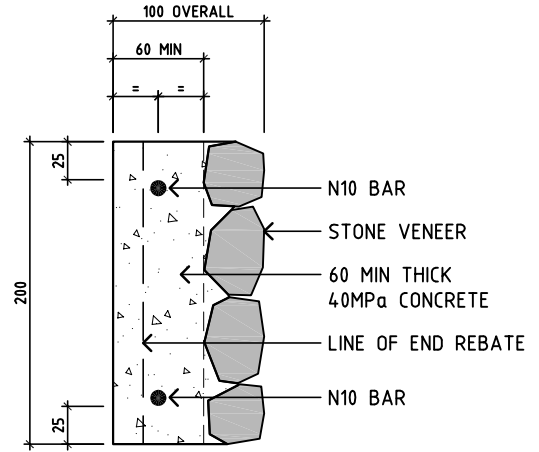
**SLEEPERS**  
D I R E C T



TOP

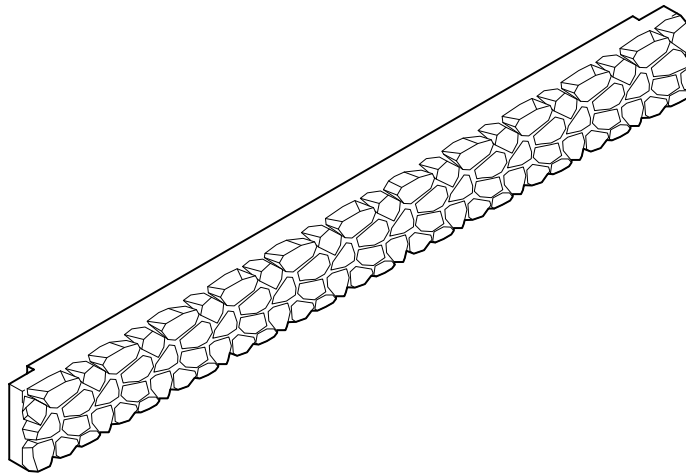


SIDE

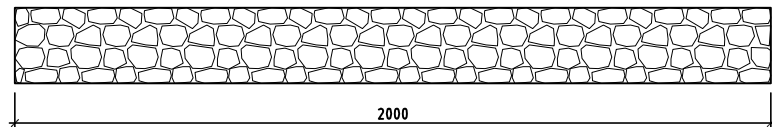


TYPICAL SECTION

SCALE = 1:5 @ A4



ISOMETRIC



FRONT

**'ARTISAN' CONCRETE SLEEPER**

**2000mm LONG x 200mm HIGH x 100mm THICK OVERALL**

SCALE = 1:20 @ A4

**MAX RETAINING HEIGHT - 1000mm**

SPECIFICATIONS FOR CONCRETE SLEEPERS

- CONCRETE COMPRESSIVE STRENGTH = 40 MPa
- STEEL REINFORCEMENT = 2No. N10 BARS PLACED CENTRALLY, 25 COVER
- ALL SLEEPERS ARE MECHANICALLY VIBRATED DURING PLACEMENT OF CONCRETE AND STEEL
- SURCHARGE LOAD ASSUMED TO BE 5kPa
- SLOPE AT TOP OF WALL ASSUMED TO BE ZERO
- NO HYDROSTATIC PRESSURE
- ALL NEW OR EXISTING STRUCTURES TO BE 500mm BELOW ANGLE OF REPOSE
- NOT TO BE USED WITHIN 50m OF THE COAST

DRAWING No.

**10124A - S2**

DATE FEB 2017